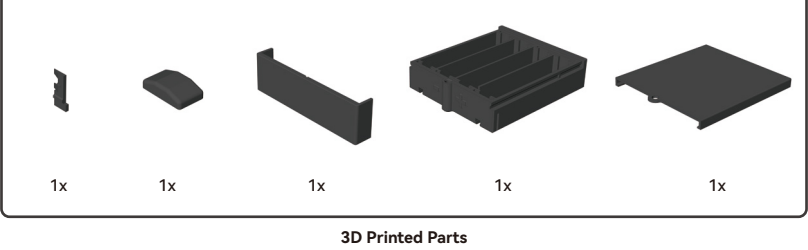
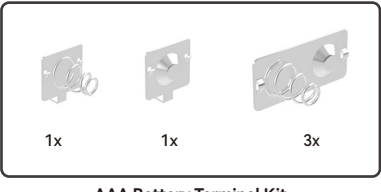
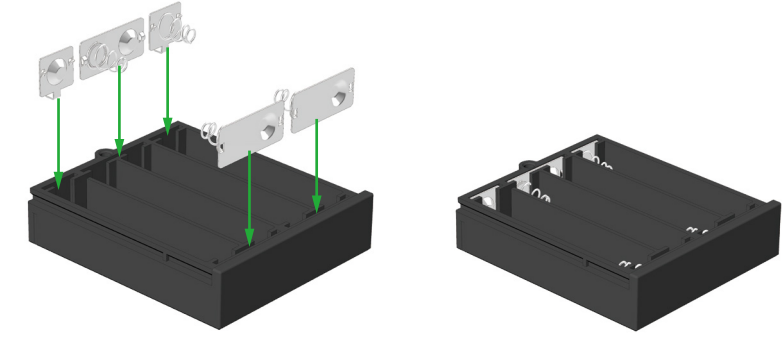


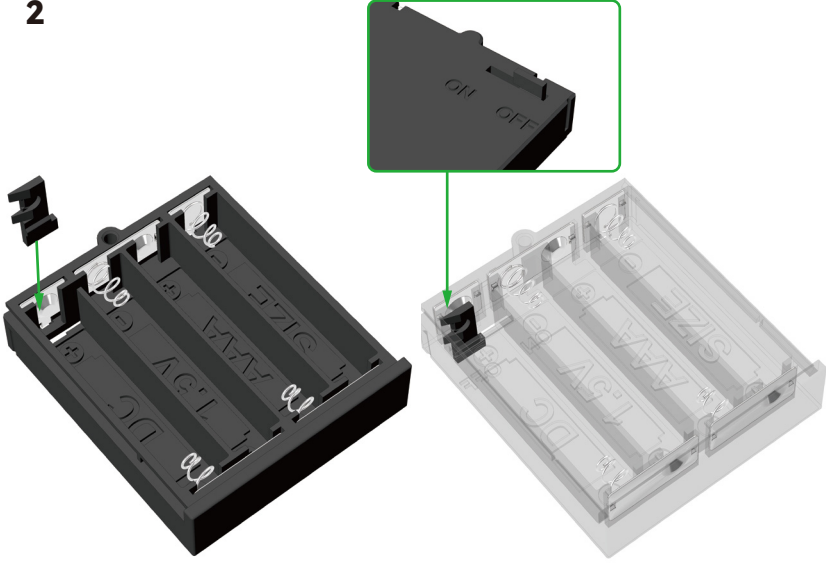
Assembly Guide



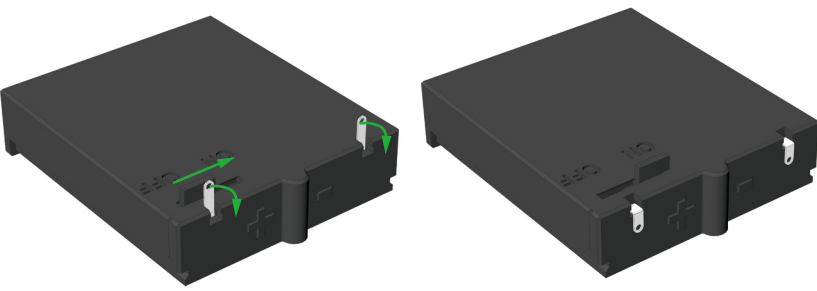
1



2

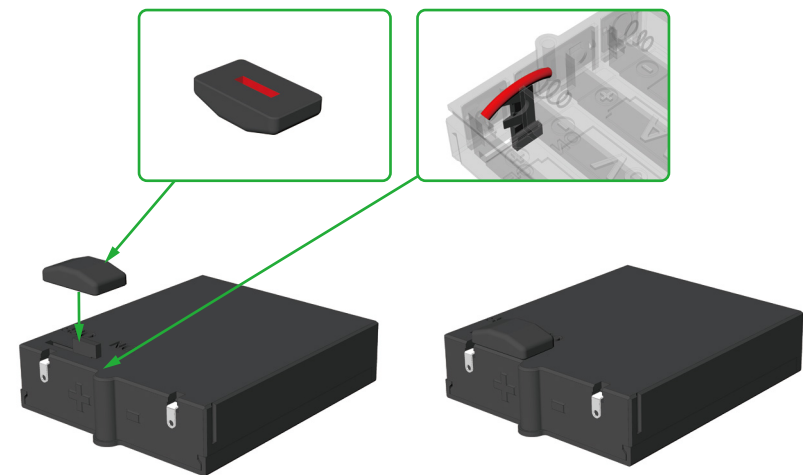


3

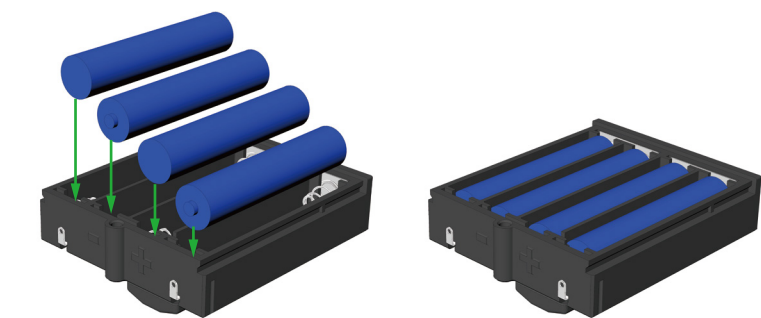


4

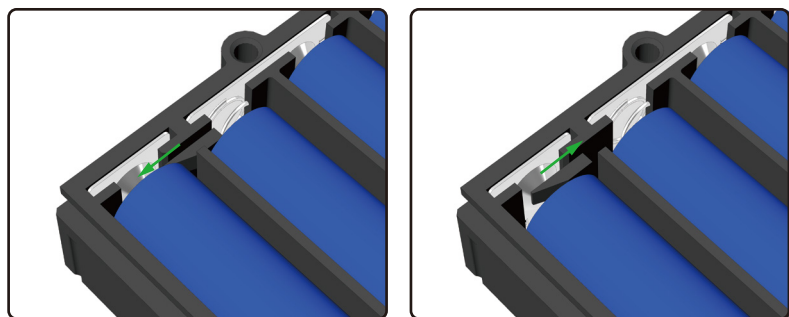
Insert the switch into the plate. Before insertion, it is recommended to add a drop of glue to the slot to prevent possible leaning or separation of the barrier. When installing, it is recommended to hold the barrier with a small section of filament as shown in the picture to avoid the risk of possible damage from the slots. Once installation is complete, please remove the filament. If there is some slight leakage of glue, push the switch to avoid the switch sticking to the battery box.



5



6



Install the batteries according to the positive and negative poles of the battery box, push the switch to check if the movement is smooth.

7

